

., .6, . , 153021

./ (4932) 30-30-13 E-mail: ivrpm@37.rospotrebnadzor.ru, <http://37.rospotrebnadzor.ru/>
75902192, 1053701042449, / 3702068140/370201001

2014

2015 .

258/340 16.11.2007 . «

».

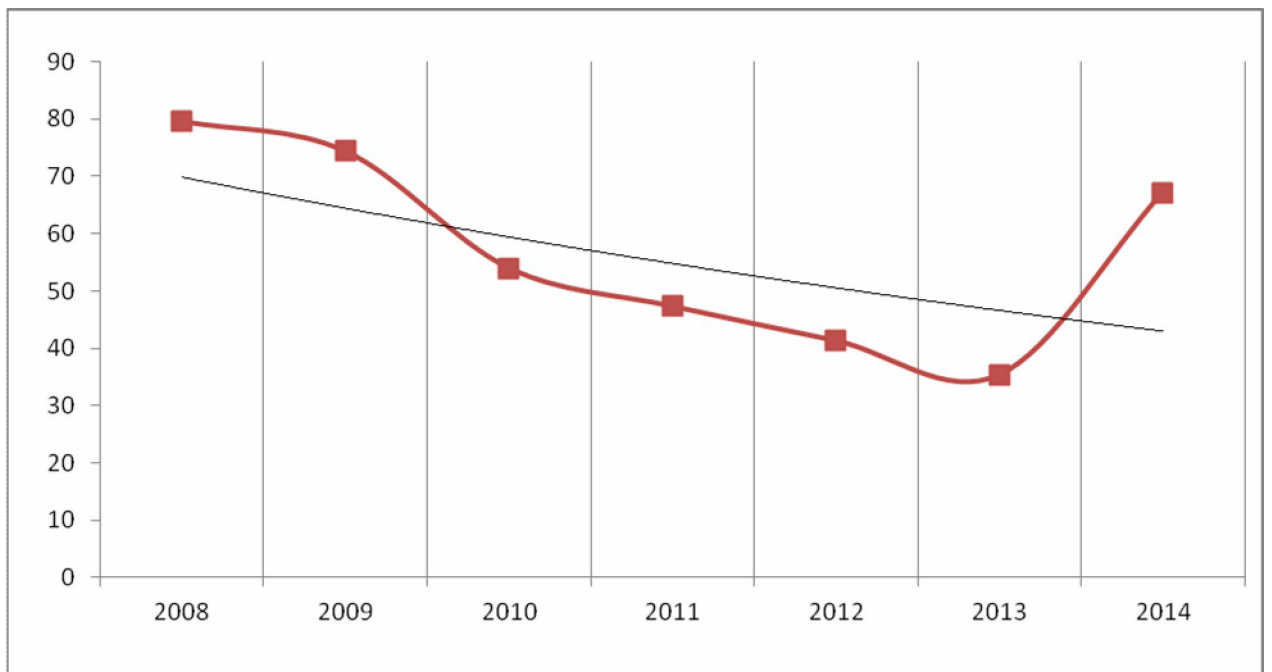
2014

58-

1/ «

»

(2008-2014 .) 7,84 % (1).



.1.

(100 .).

2014

701

, 67,2 100 . .

(.2).

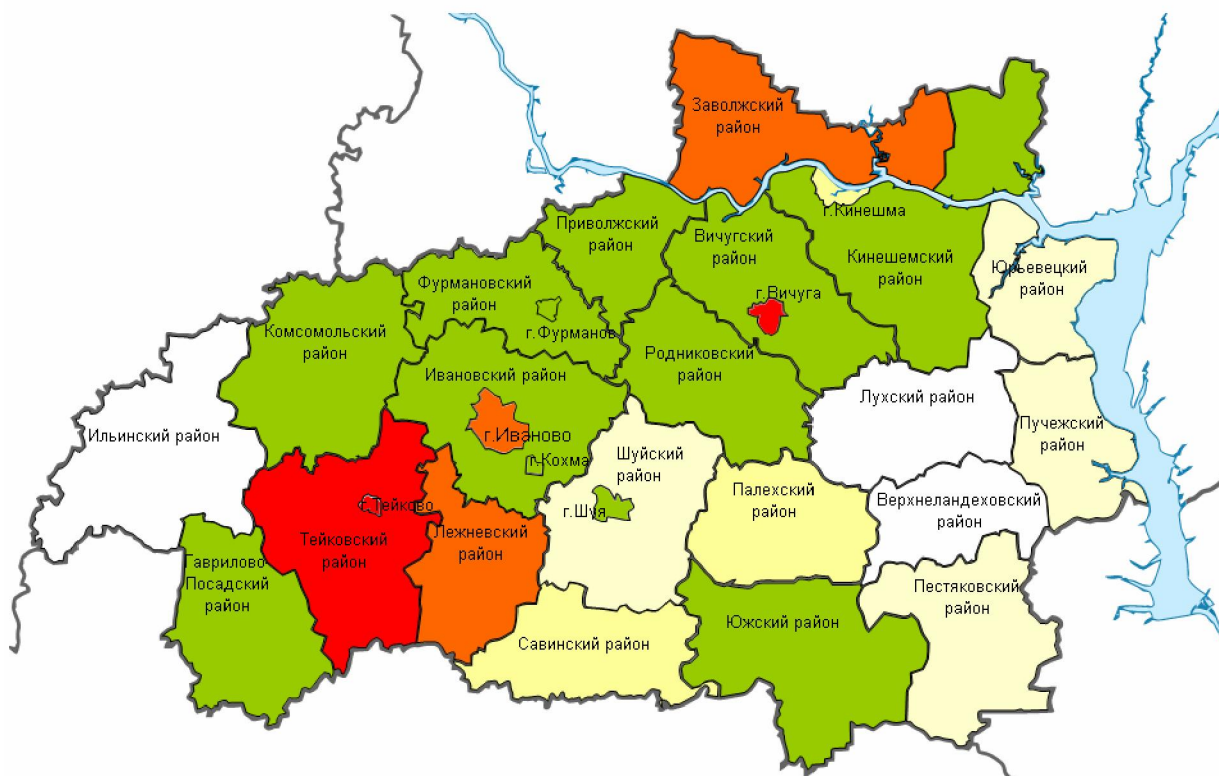
2012 2013

58-1/

«

»

Градации показателя в 2014 году:



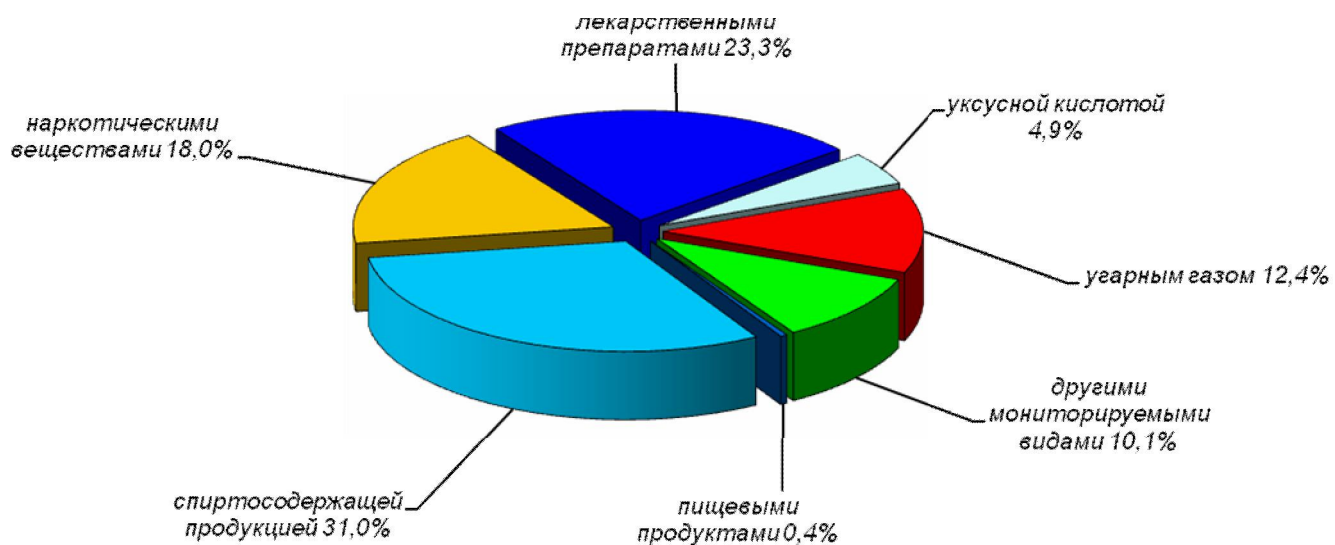
.2.

30,96%

27,39% (

– 46,2%),

23,25% (.3).



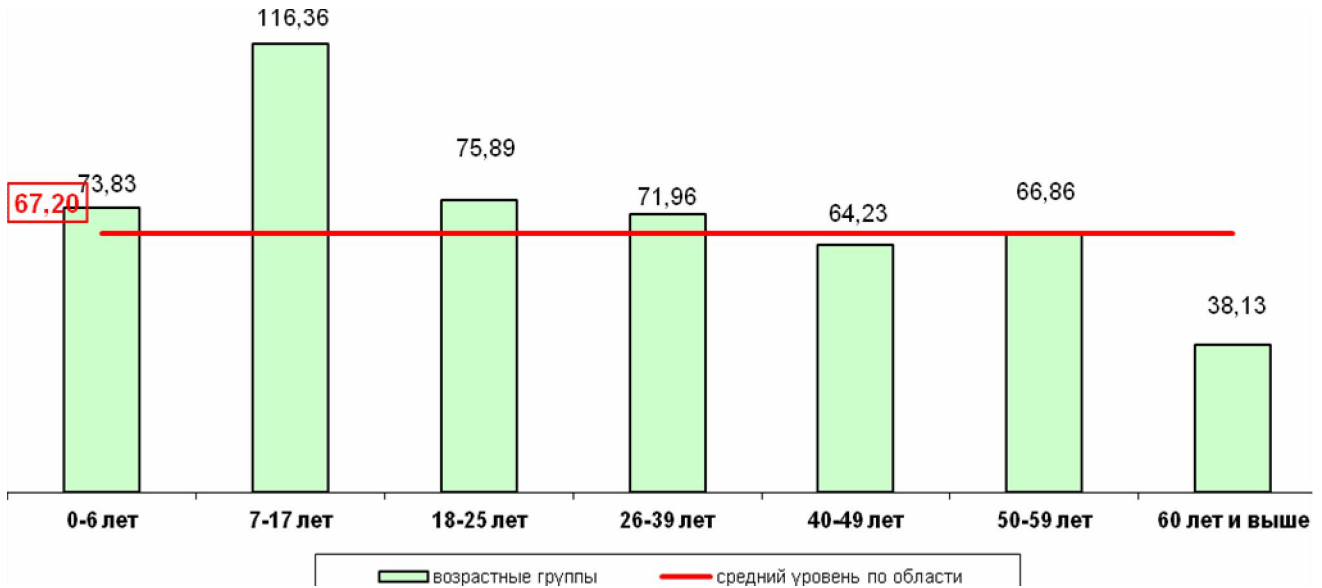
.3.

(%).

18 59 (62,77%).
26-39 – 159 (22,7%)

2014 41 14
(16 6).

1,1 (73,83 100 . , 7-17 1,73 (116,36 100 .), 18-25 1,13 (75,89 100 .), 26-39 1,07 (71,96 100 .) (.4).

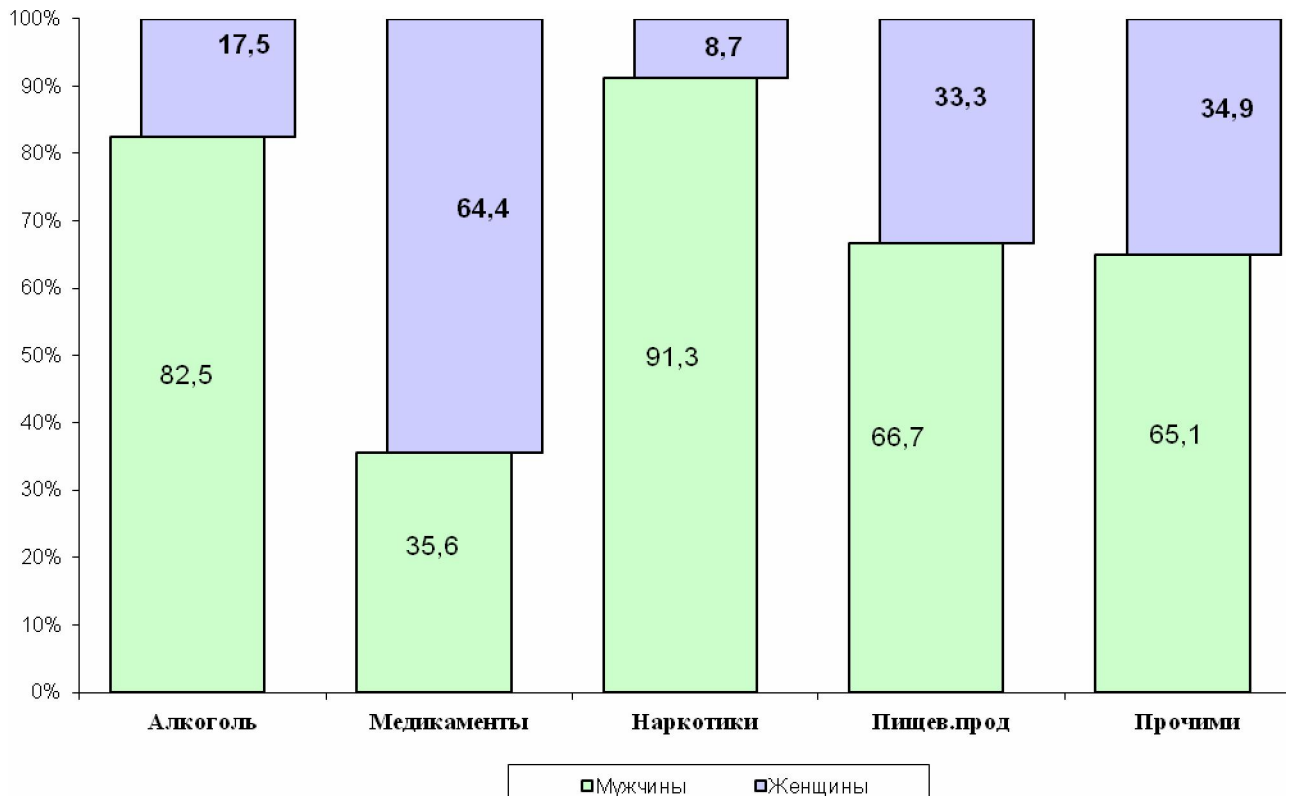


.4.

(100 .)

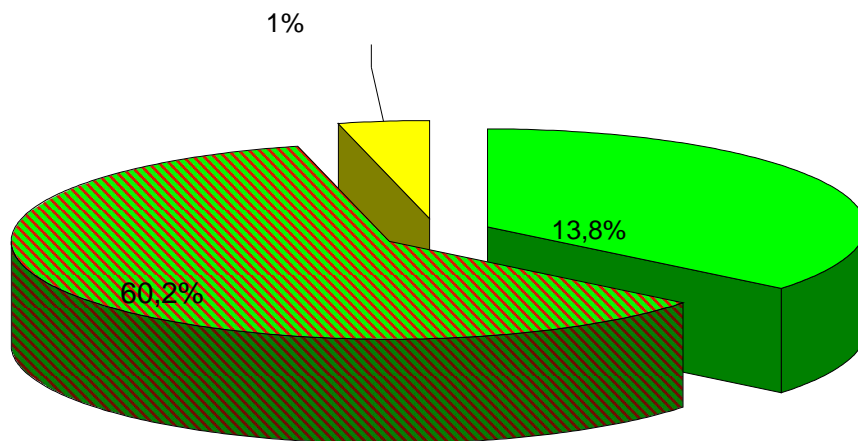
– 35,95 %.

(.5).



.5.

(.6).

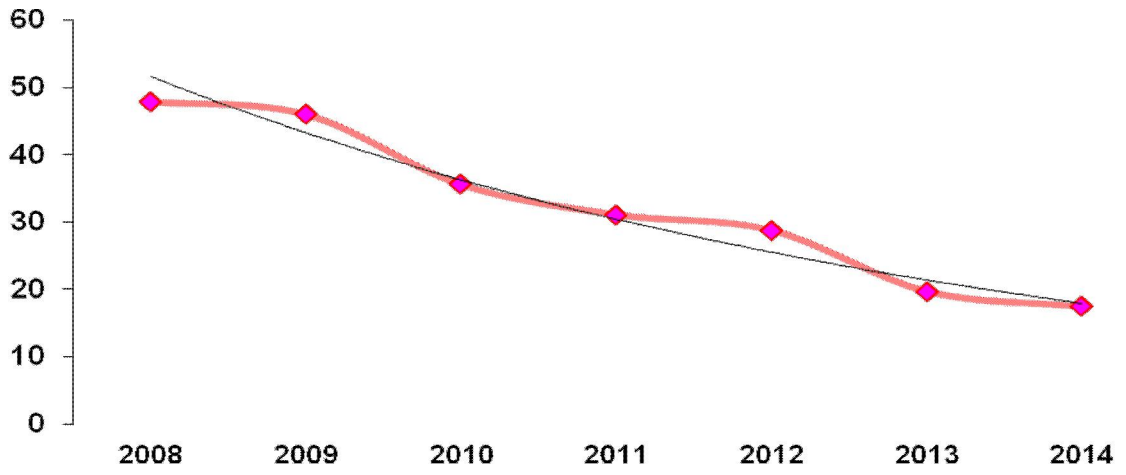


.6.

182

2014
17,45 100

(2008-2014) 16,84 % (7).

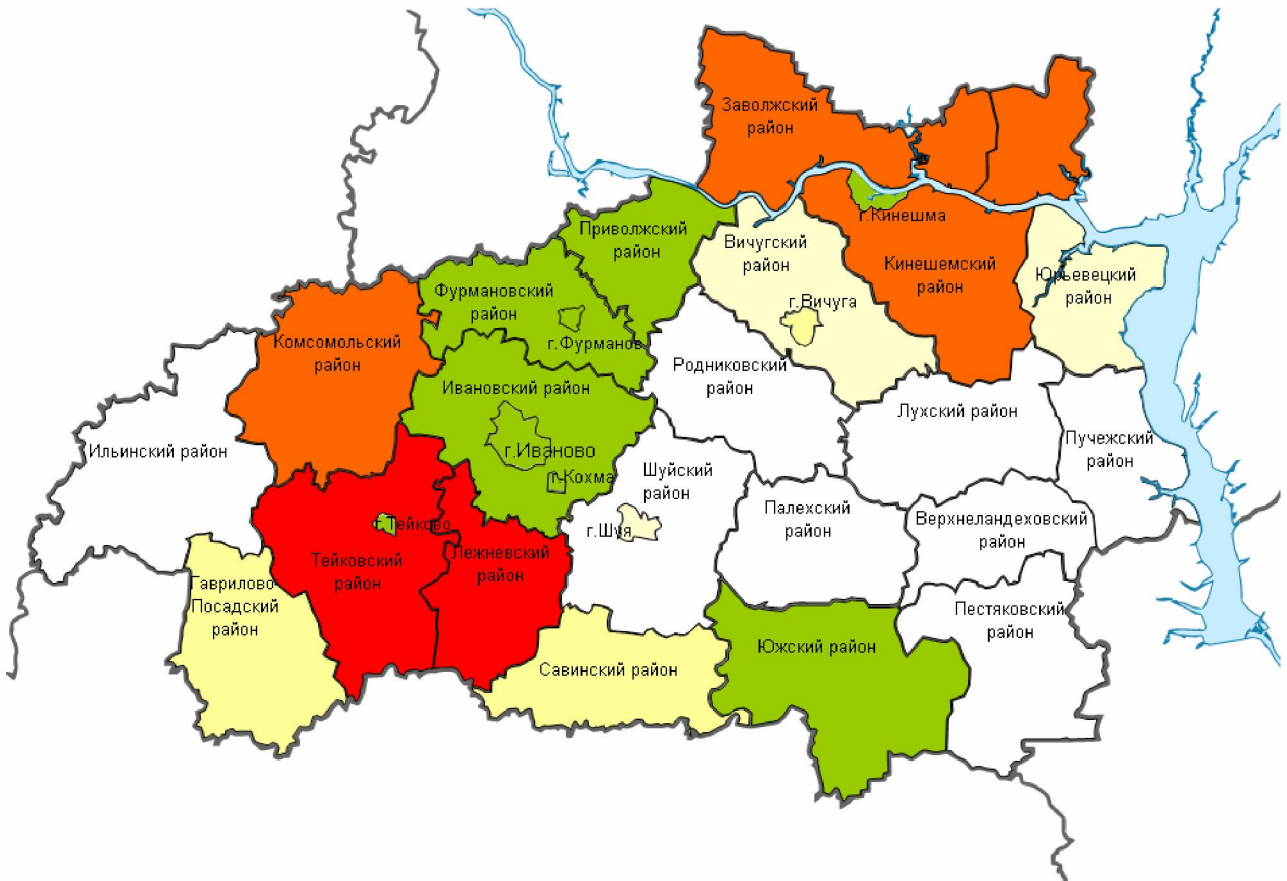


.7.

(100 .).

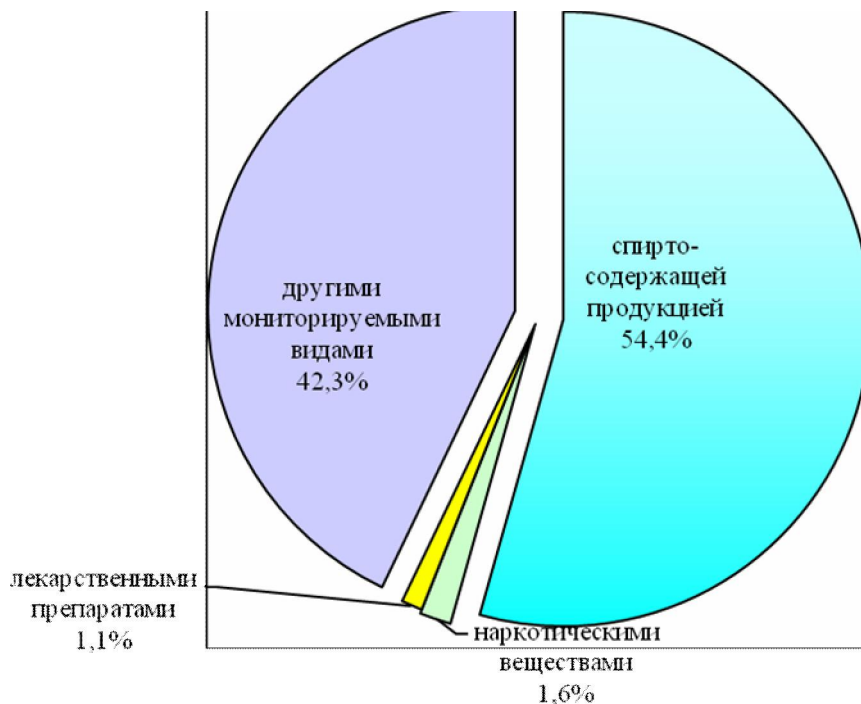
(.8).

Градации показателя в 2014 году:



.8.

– 54,4 % (.9).



.9.

(%).

2014 .

217

20,8 100 . .

- 42,5 100 .

- 36,4 100 .

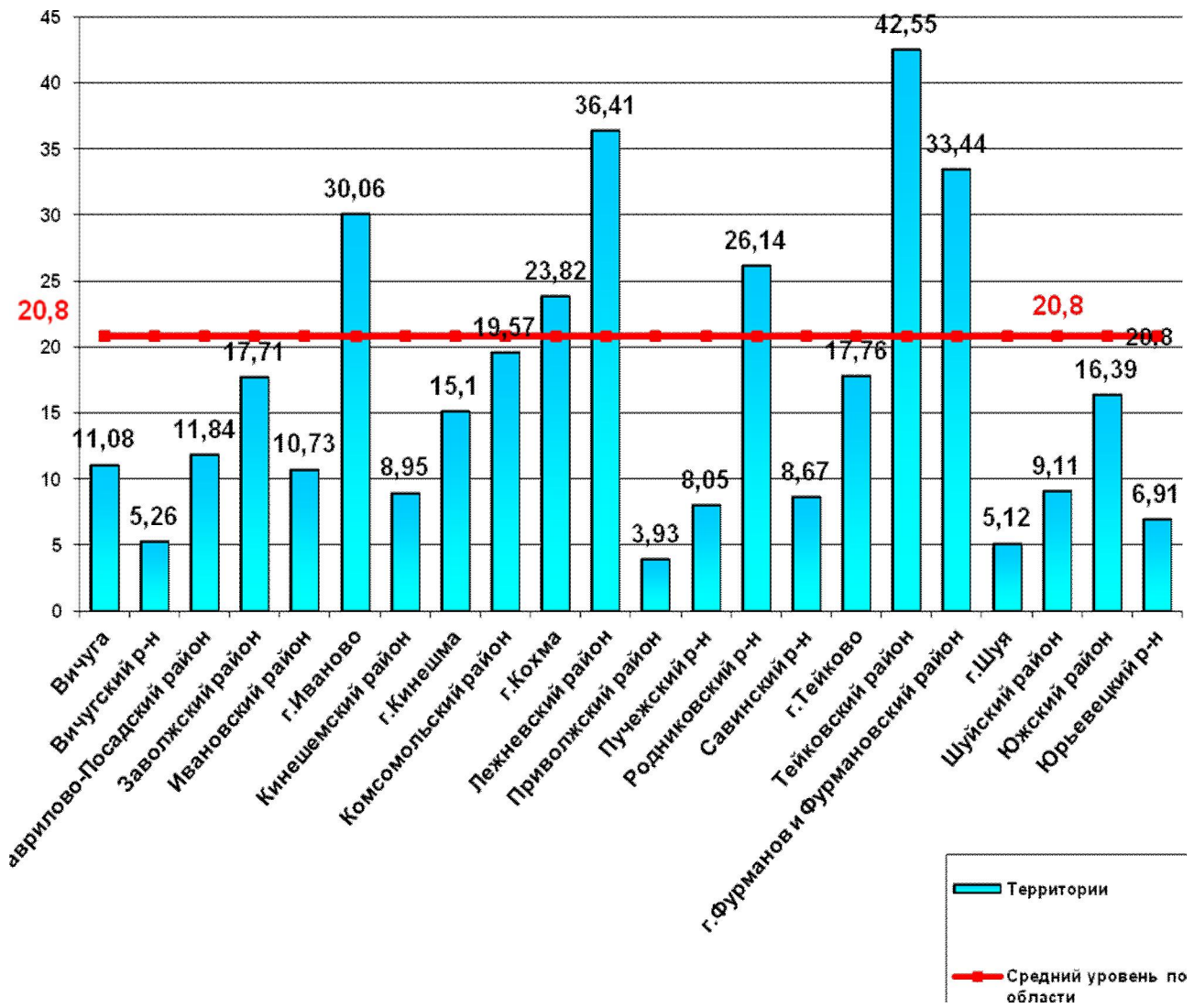
;

- 33,4,

- 30,1;

26,1 100 .

, . - 23,8 (.10).



.10.

217

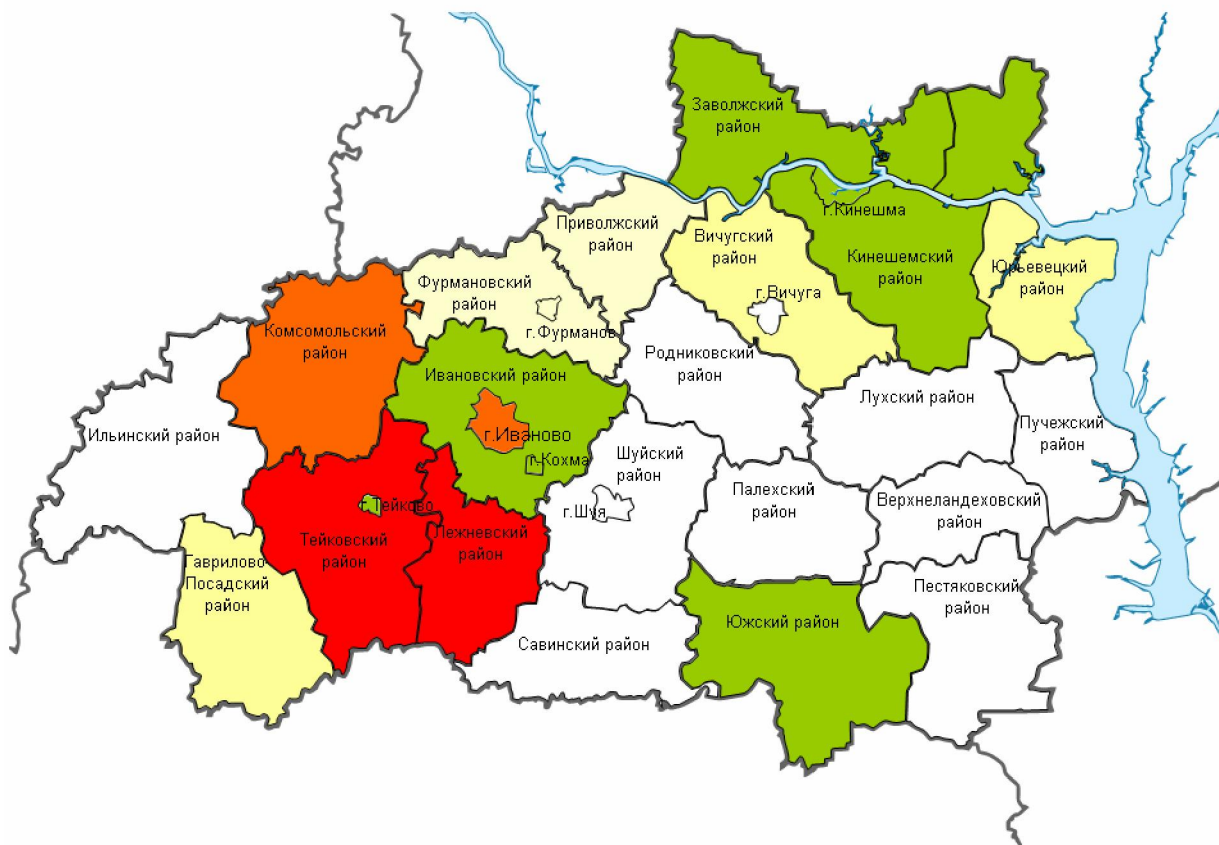
– 99

9,49

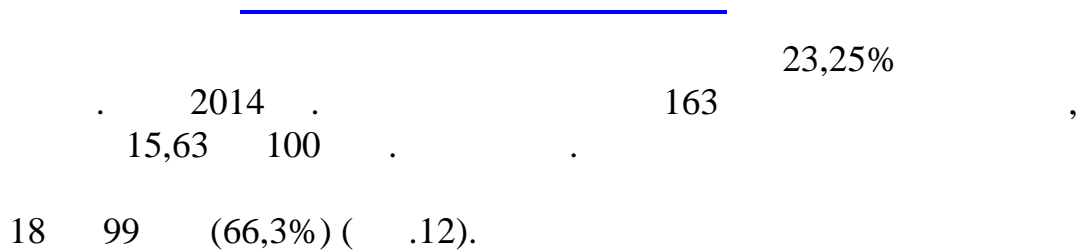
100000

(. 11).

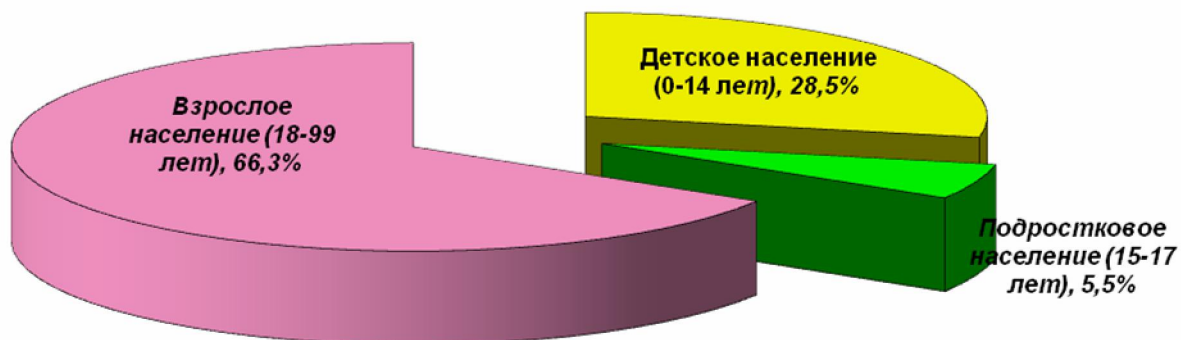
Градации показателя в 2014 году:



.11.

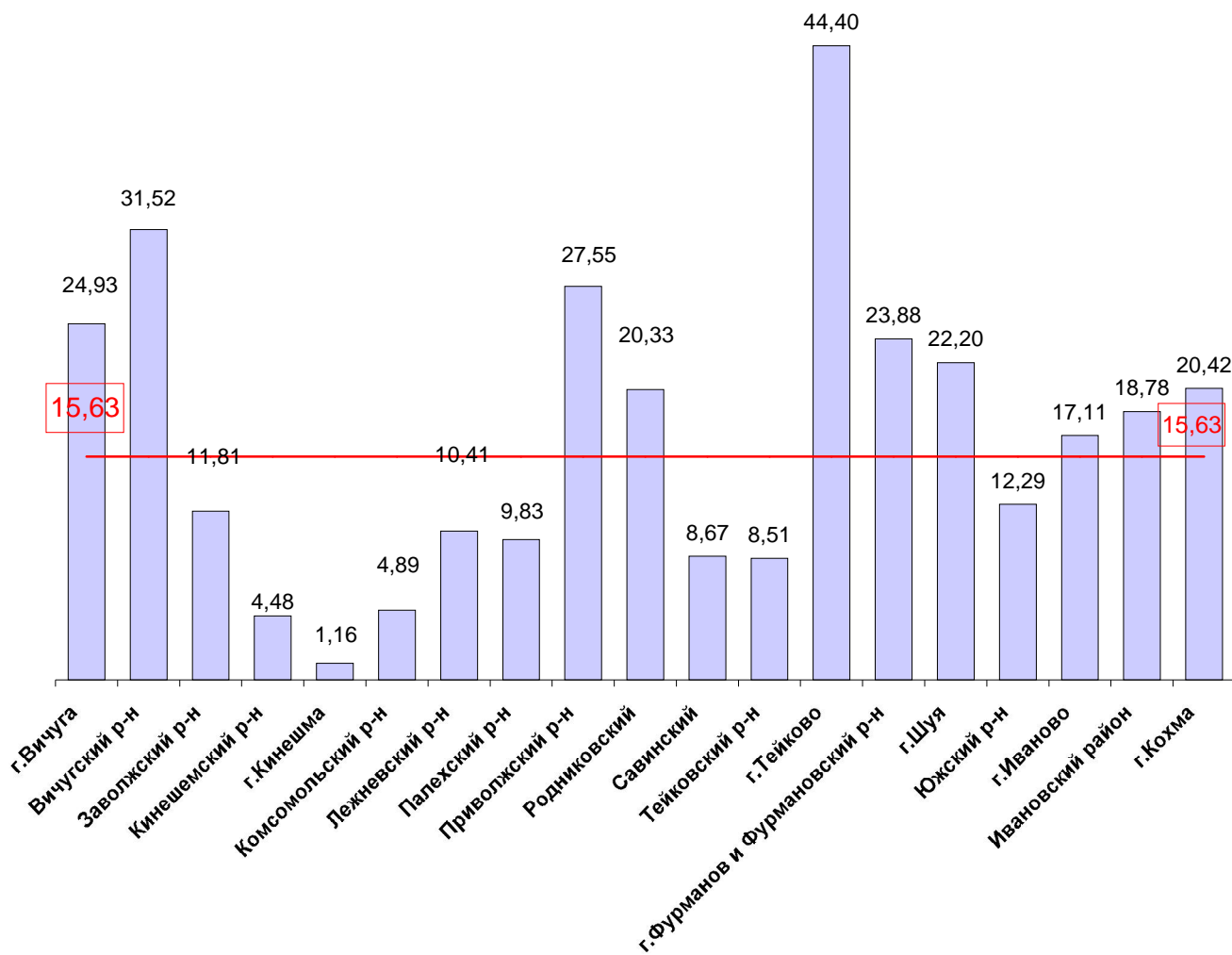


.12).



.12.

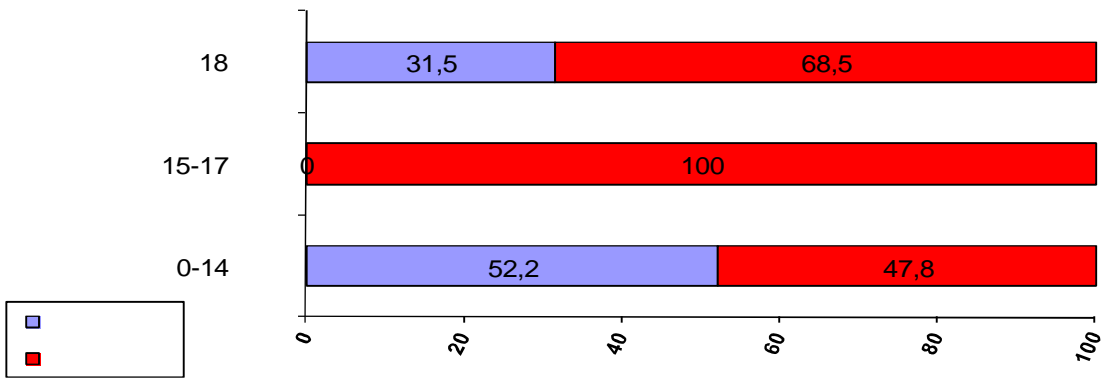
44,4 . 100 . , 31,52 .
 100 . , – 27,55 . 100 . ,
 . – 24,93 . 100 . , – 23,88 . 100 .
 , . (.13)



.13.

0-14 ; 15-17 18
 20,9%; 8,6% 70,5%, - 41,4%, 0 58,6%

31,5% , 68,5% ; 15- 17 – 100 % 18 –
 14 – 52,2% , 47,8 %- (.14). ; 0



.14.

()

-0,57 100 . , 2012 -1,23 100 . (2013 -2 0,19 100 .)

2014

18%

58,7%

126

12,1 100 .

18,1 100 .

(2,4 %).

- 3

27,8%

18,69

2014

100 .

195

44,6%).

, 34

(87

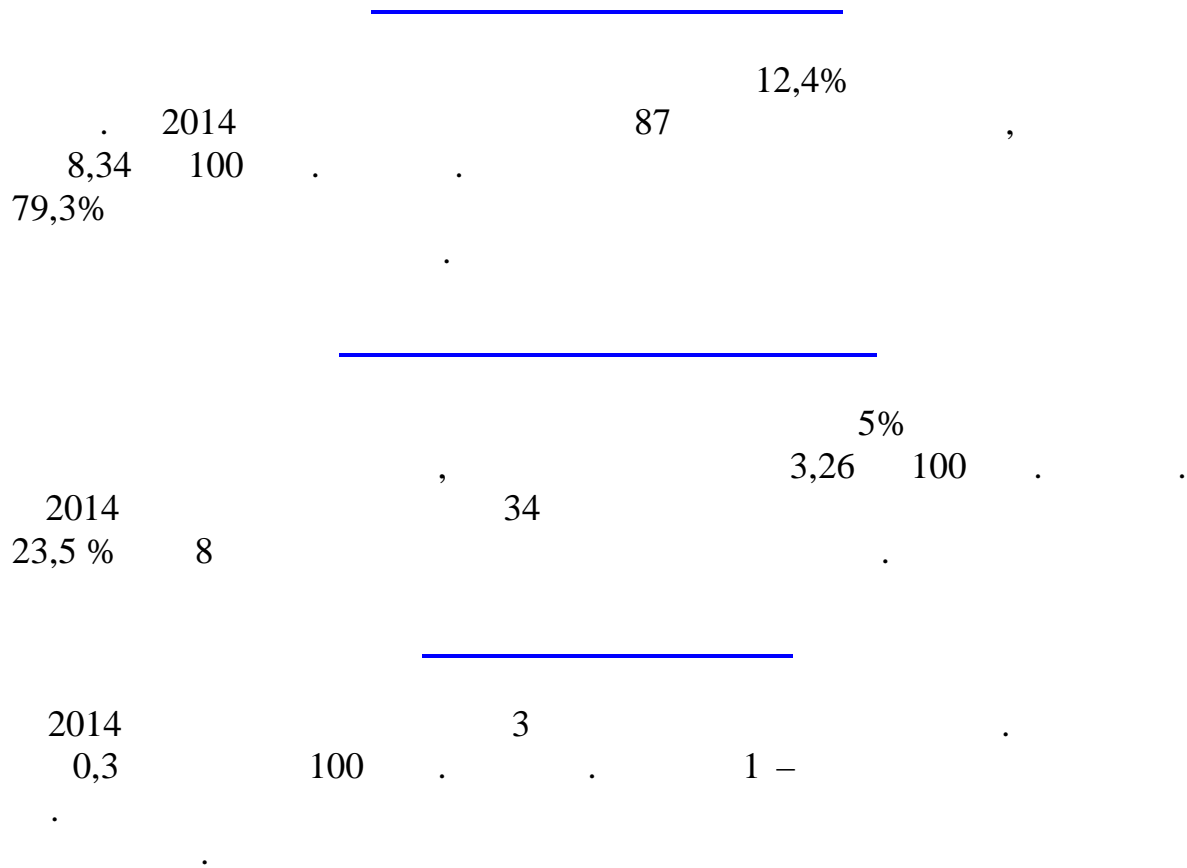
, 12

21

, 12

, 3

, 10



1.



31 %

2.

3.

4.

5.

58-1/

2014

6.

•

•

•

•

•

•

•