

., .6, . , 153021

./ (4932) 30-30-13 E-mail: ivrpn@37.rospotrebnadzor.ru, <http://ivrpn@37.rospotrebnadzor.ru>
75902192, 1053701042449, / 3702068140/370201001

2015

, 2016 .

27.03.2015 6 "

"

2015

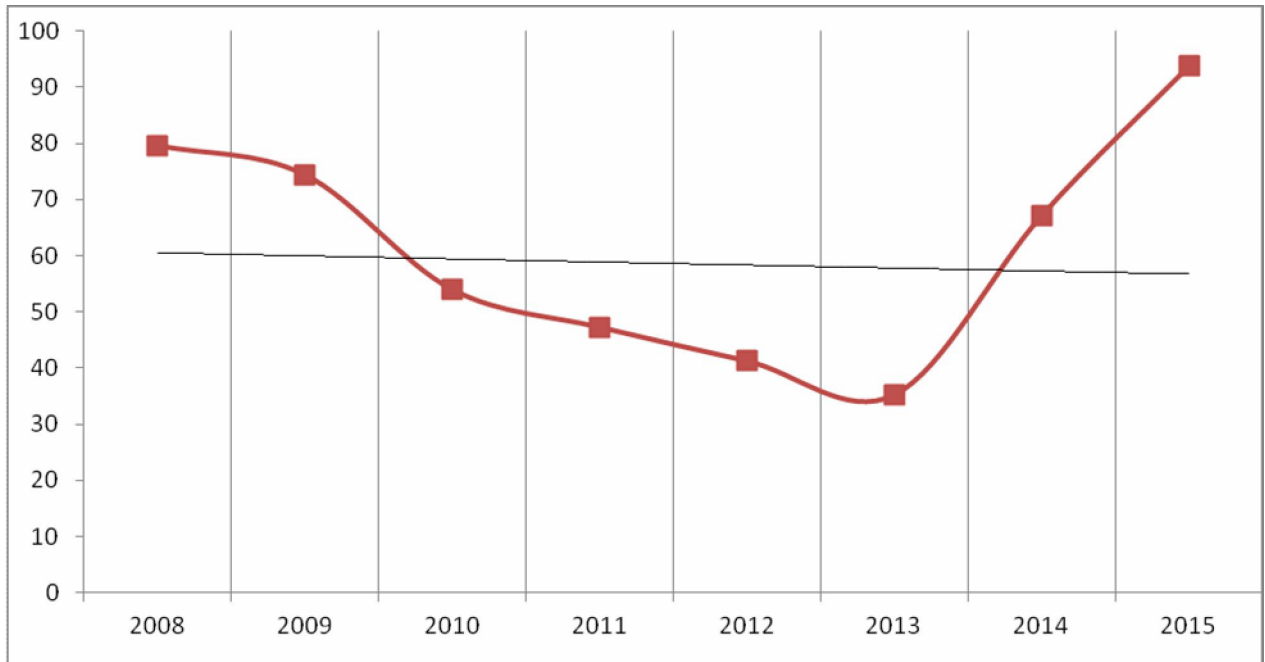
,

58-1/

«

»

(2008-2015) 1,7 % (1).



.1.

(100 .).

2015

,

93,74 100 .

972

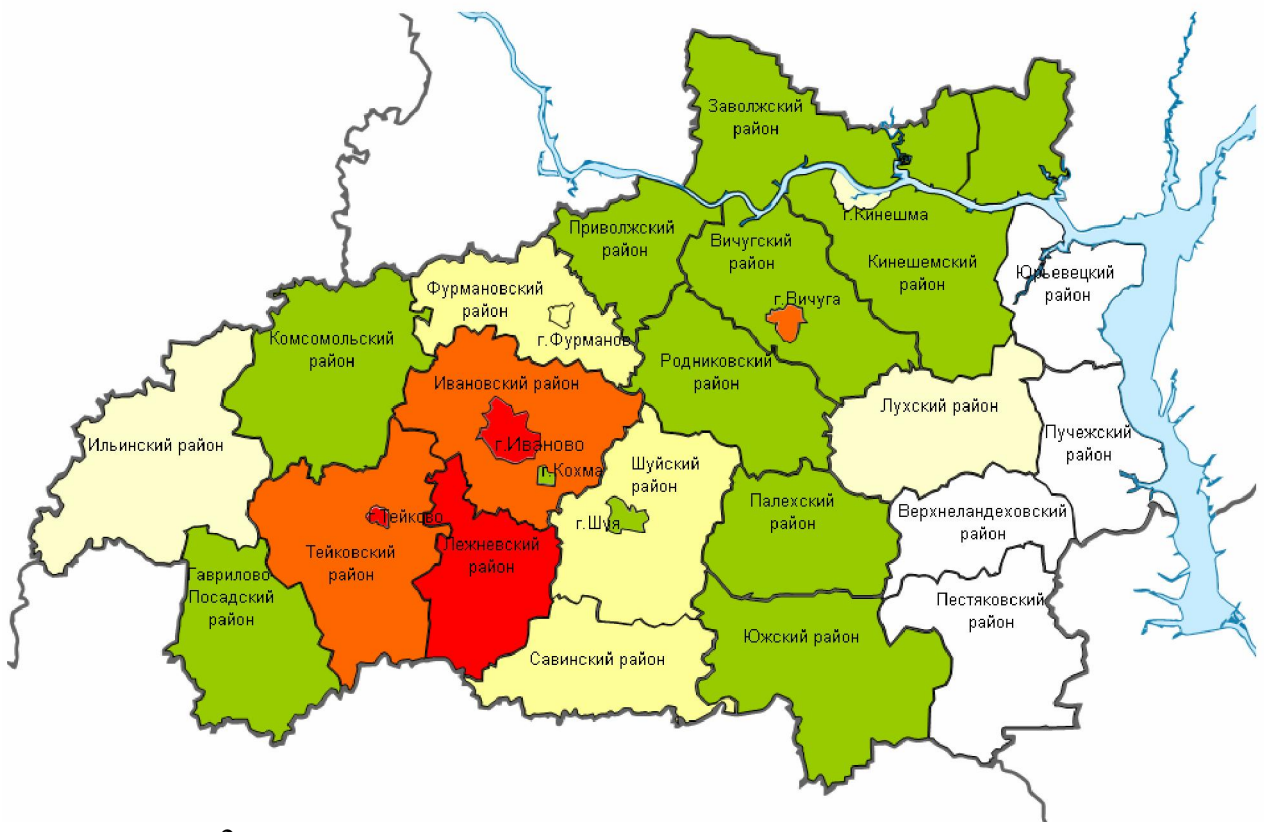
.

,

, ,

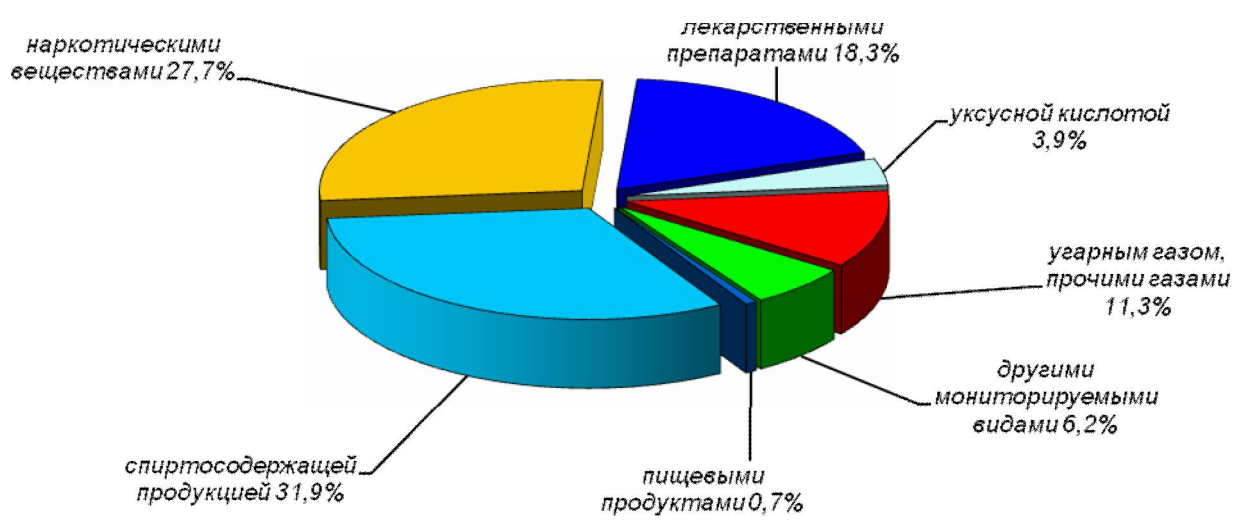
(.2).

Градации показателя в 2015 году:



.2.

31,89%
 , 27,67% -
 21,39% (, - 52,88%,
),
 18,31% (.3).

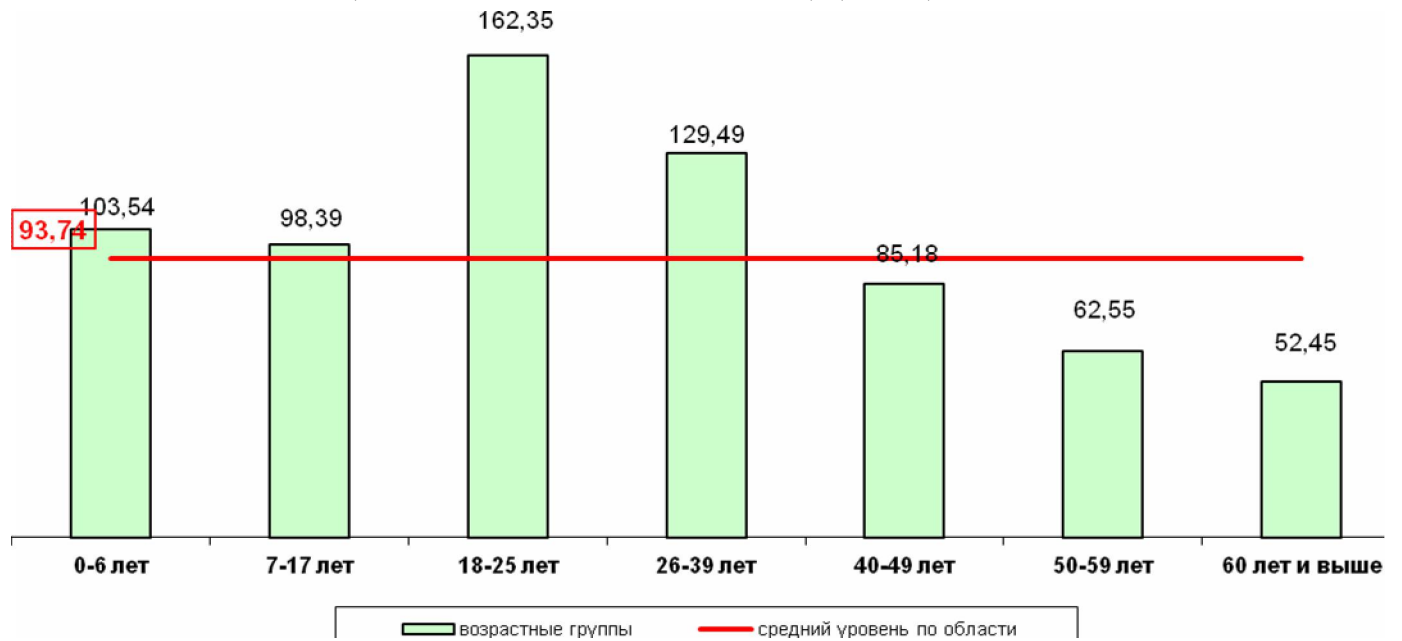


.3.

(%).

18 59 (68,62%).
 26-39 – 287 (29,53%)
 2015 126 14
 (81 6).

: 0-6 1,11 (103,54 100 .), 7-17 1,05
 (98,39 100 .), 18-25 1,73 (162,35 100 .),
 26-39 1,38 (129,49 100 .) (.4).

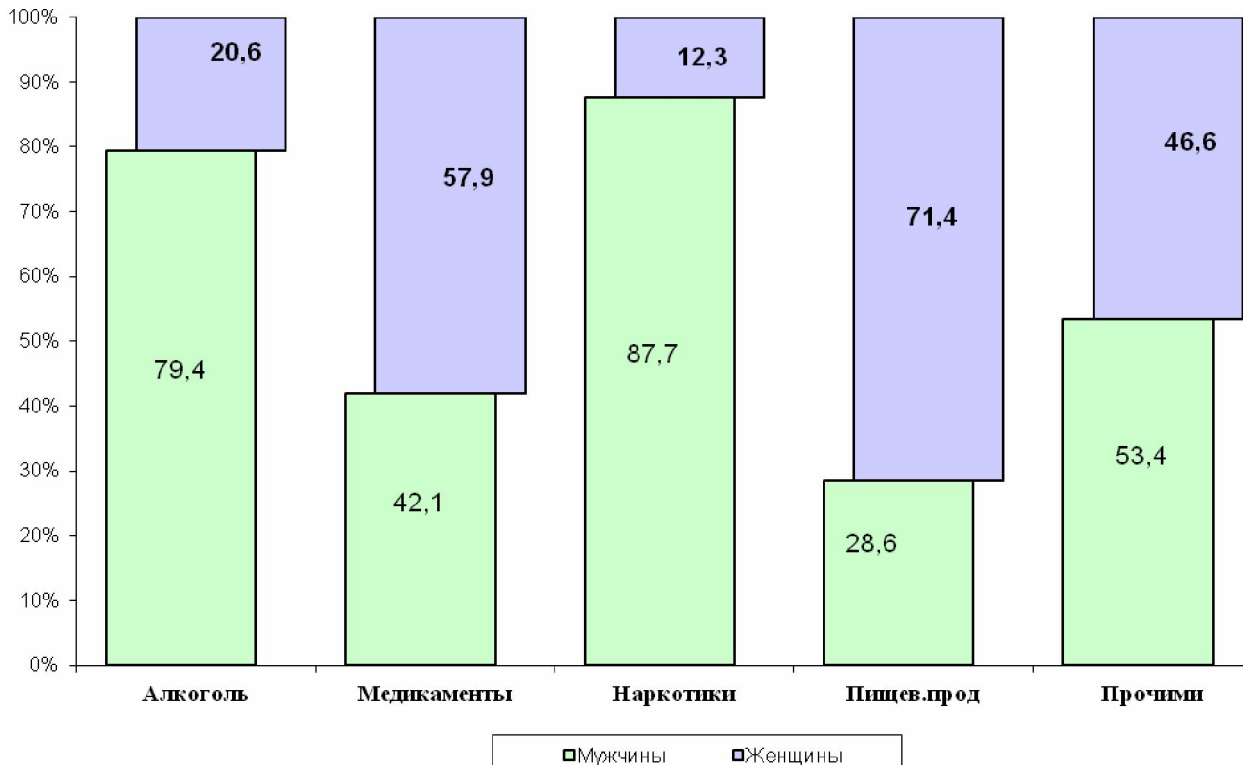


.4.

(100 .)

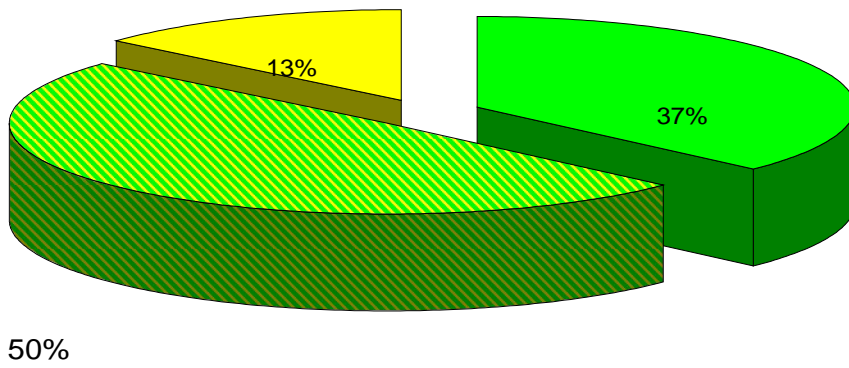
– 43,11 %.

(.5).



.5.

(.6).

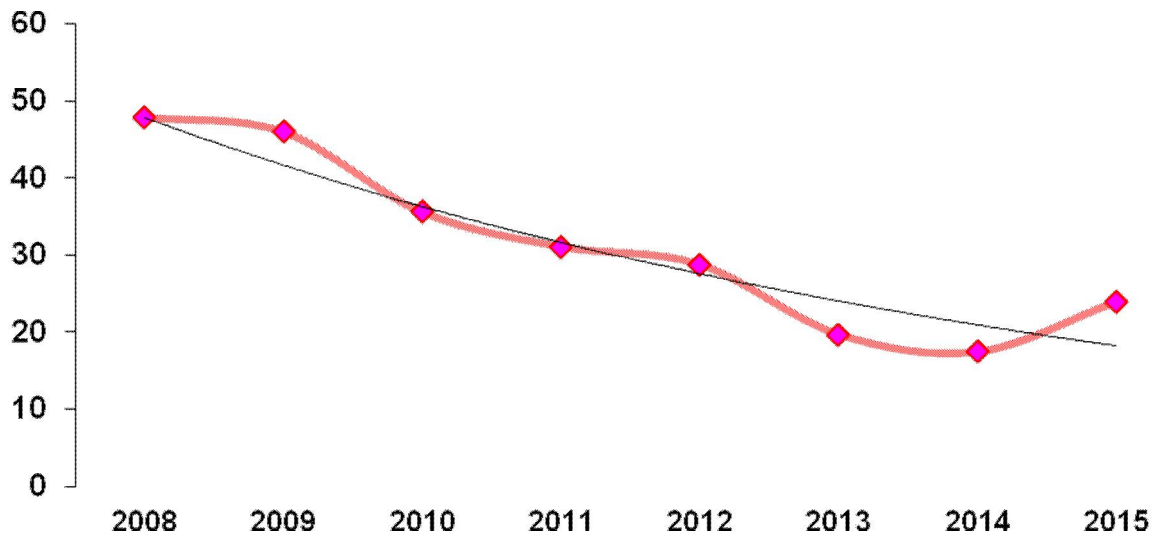


.6.

248

2015
23,92 100

(2008-2015 .) 13,87 % (7).

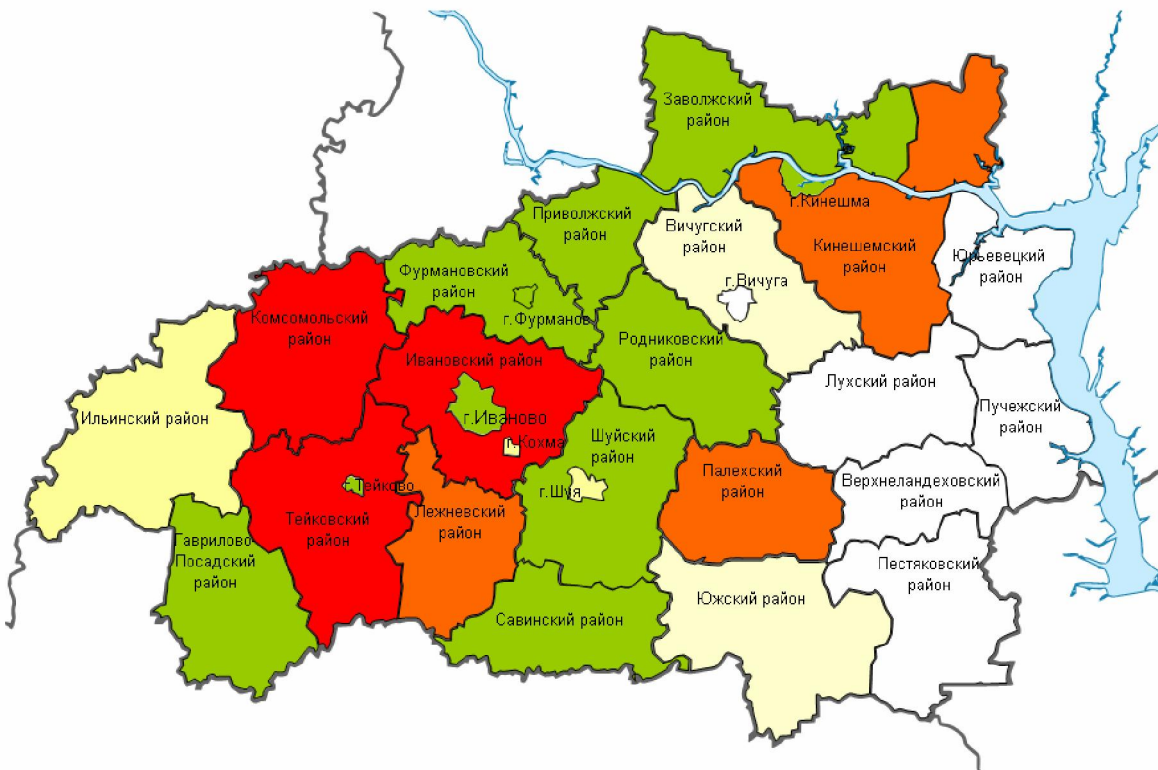


.7.

(100 .).

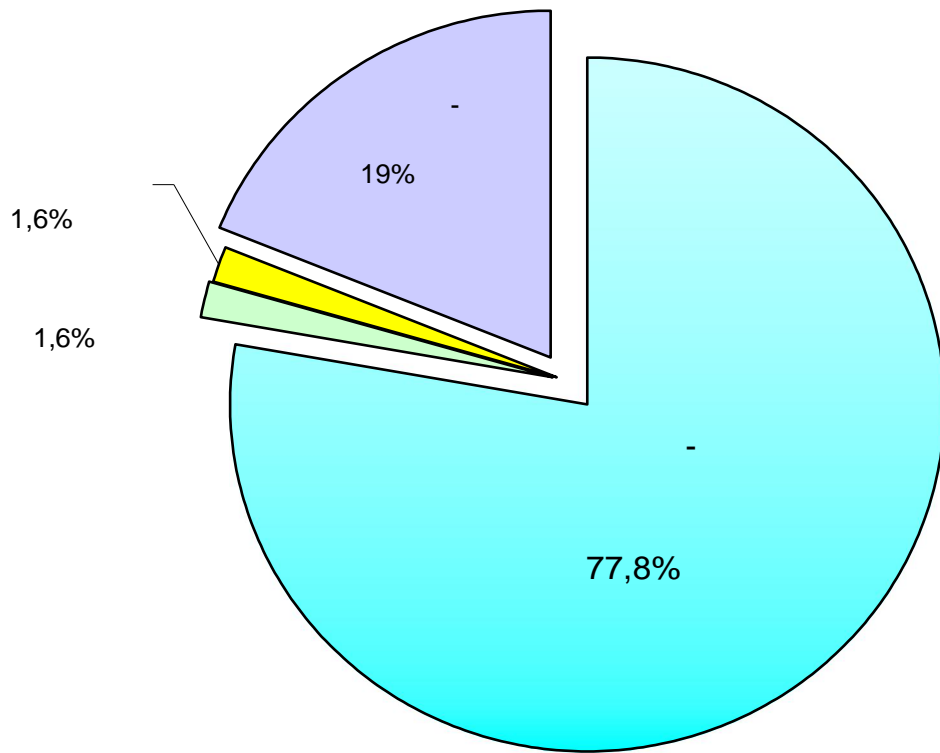
(.8).

Градации показателя в 2015 году:



.8.

– 54,4 % (.9).



.9.

(%).

2015 .

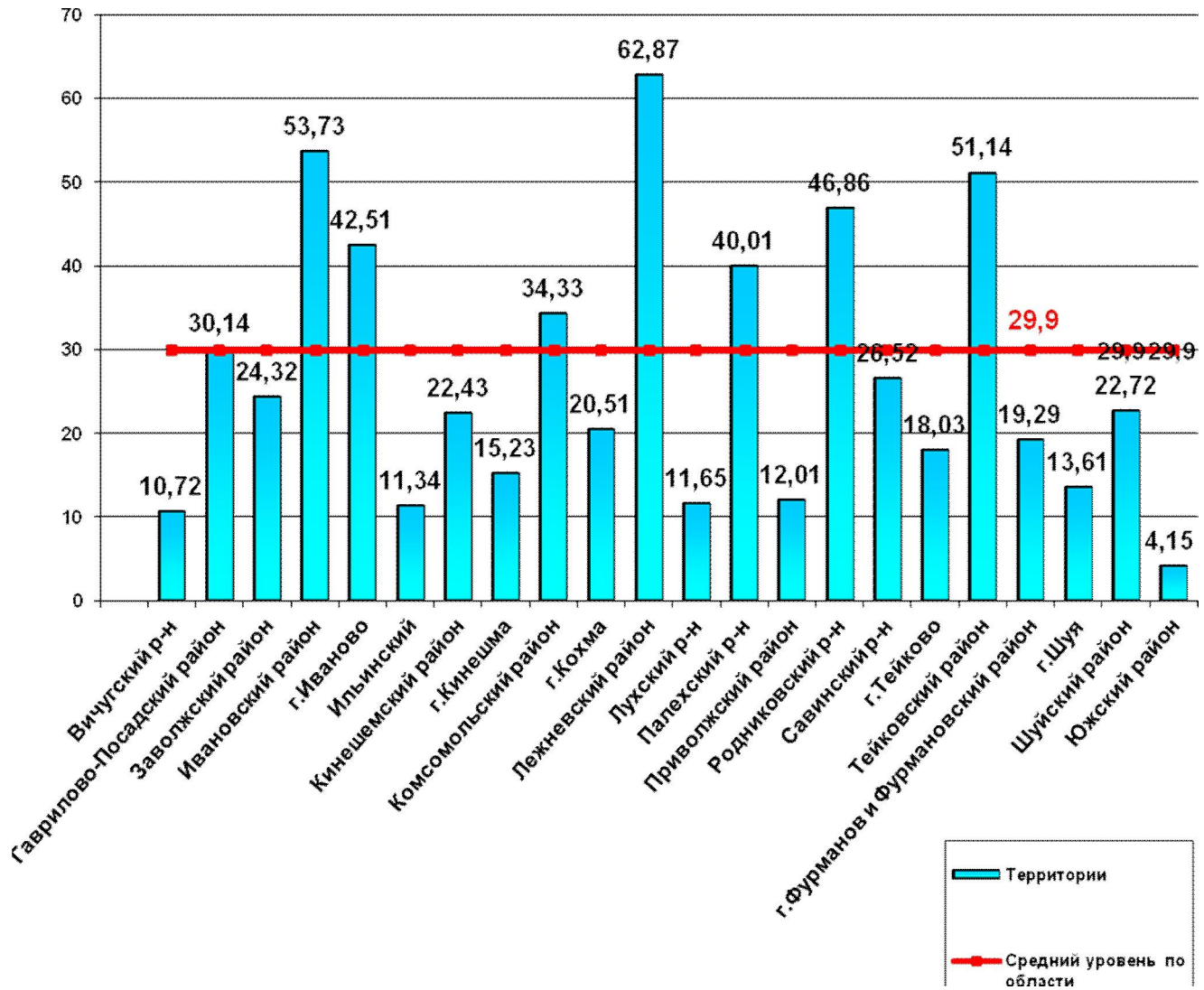
310

29,90 100 . .

–
53,73;
42,51;

62,87 100 .
– 51,14,
– 40,01;
– 30,14 (.10).

, –
– 46,86; . –
– 34,33, –



.10.

310

100000

– 193

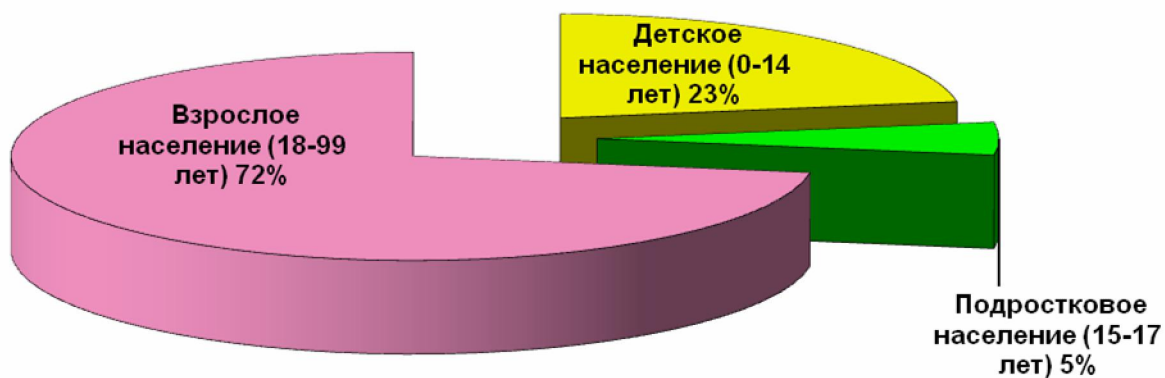
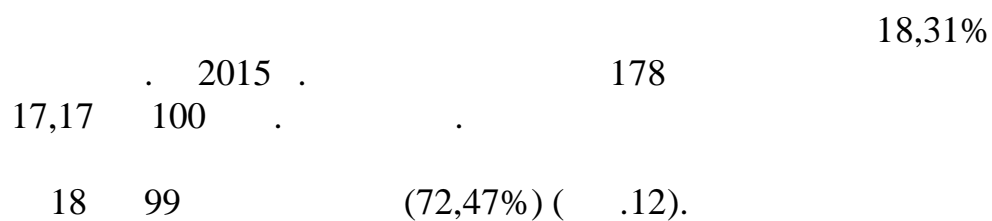
18,61

(. 11).

Градации показателя в 2015 году:

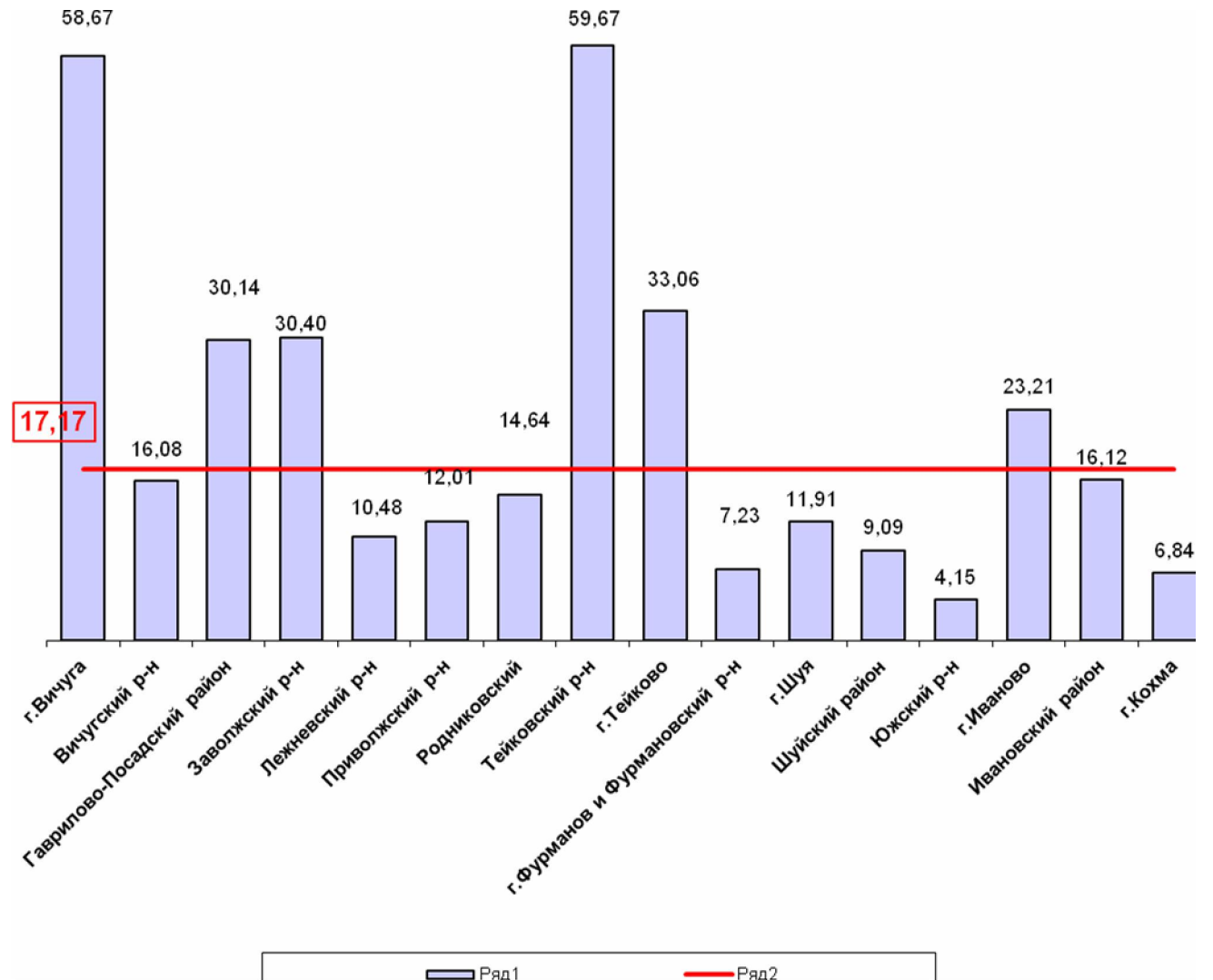


.11.



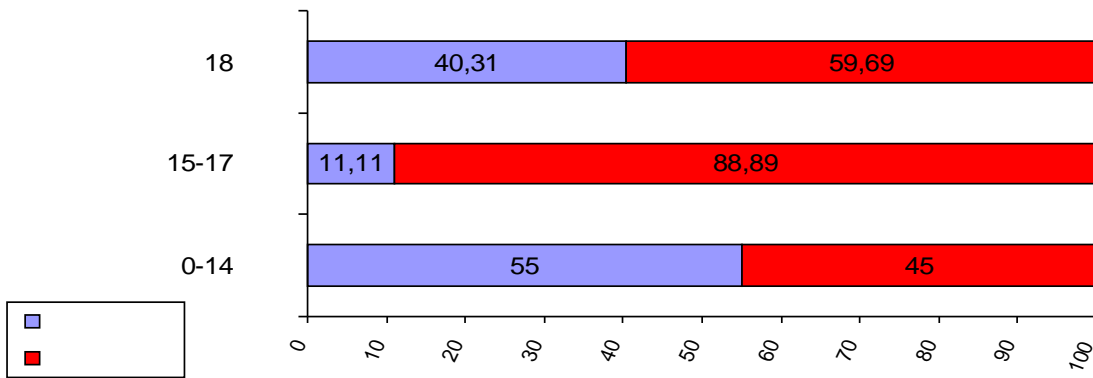
.12.

– 59,67 100 ; – 58,67; –
 33,06; – 30,4; – 30,14;
 -23,21 100 (.13)



.13.

0-14 ; 15-17 18
 17,47%; 7,77%; 74,76%; - 29,33%;
 1,34%; 69,33%.
 40,31% , 59,69% ; 15- 17 – 11,11% , 88,89%
 0 14 – 55% , 45 %- (.14).



.14.

()

- 4
 0,39 100 . (2014
 - 0,19 100 . , 2013 - 0,57 100 . , 2012
 - 1,23 100 .).

2015 27,67%

269
 25,94 100 .

73,98%

19,19 100 .

- 4

(1,49 %).

21,40%

20,06 2015 100 .

208

37,5%).

(78

(48), 38

, 14

32

, 10

, 8

, 5

2015
100 .
35 .

78 .
8,02% .
44,87% .

7,52 .

2015
7 .
18,42% .

38 .
3,91% .
3,66 100 .

2015
0,68 .
100 .

7 .
5 - .

1.



31,89 %

2.

3.

4.

(73,98%)

5.

58-1/

«

2015

».

6.

•

•

•

•

•

•

•